



AGJENCIA KOSOVARE E PRIVATIZIMIT
KOSOVSKA AGENCIJA ZA PRIVATIZACIJU
PRIVATISATION AGENCY OF KOSOVO

FACT SHEET

SOE Name	NSHB ELAN (the “Enterprise”)
Name of NewCo	NewCo Elan Administrative Building L.L.C. (the “Subsidiary”)
Location	Deshmoret e Kombit n.n, (Near Albi Center market) Vushtrri/Vuçitrn Municipality
Business/Sector	Agriculture
Products	The Enterprise grows agricultural products for the food processing industry. Recent years has produced wheat, corn, and oat. The currently planted is wheat. In the land of the enterprise will have opportunities for cultivation of wheat and maize production or to build any necessary object.
Market	Several food-processing plants are currently operating in Kosovo. The main customers of the Enterprise have been in recent years the Peja Beer Factory and various flour-mills. A significant number of the current customers are SOEs and different private companies.
Competition	A significant amount of agricultural products in Kosovo have been imported post 1999. There is, therefore a significant potential for import substitution. Competition within Kosovo is at the moment limited, but expected to increase as more agricultural SOEs are either privatized or restructured to stimulate production increases.
Employees	The Enterprise has 19 actively employed workers.
Buildings and Land	NewCo Elan Administrative building L.L.C. includes an approximate area of 01ha 45ari 76m ² (14576m ²) as registered in Certificate for the immovable property rights nr.UL-70202016-00560, cadastral zone Vushtrri, Vushtrri/Vuçitrn Municipality. There are (2) building/premises to be transferred to the NewCo and which includes an approximate area of 463.18m ² . There were a building with the surface of 270m ² which has been destroyed by the management of SOE with a decision in 2009. Also an temporary construction with approximately 1012 m ² . The parcels part of the NewCo being used with agreement from the SOE management. The SOE is charged by TAK.
Liabilities to be Transferred	The NewCo has liabilities. There’s no any mortgage.

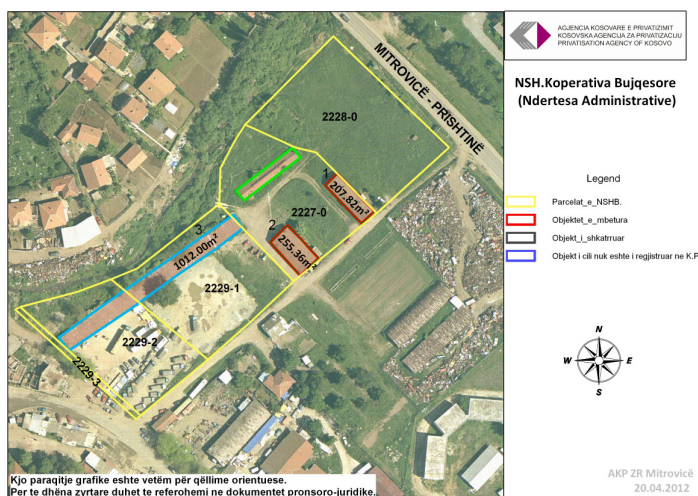
PAK Regional Office
Mitrovica
str. Mbreteresha Teute nn,
(close to Sport Center)
40 000 Mitrovica, Kosovo,
Tel: 038 534 690
Fax: 038 534 590
e-mail: info@pak-ks.org
www.pak-ks.org

No information about the NewCo presented in this Fact Sheet is warranted. Prospective investors are encouraged to contact Privatisation Agency of Kosovo (PAK) to request the bidding documents. Those wishing to submit a bid must rely on their own investigation. Prospective investors are advised to perform their own due diligence prior to submission of any bid or tender proposal. This fact sheet is available under the general terms and conditions on provision of information to the general public on privatisation candidates, which can be downloaded from the PAK Web-Site <http://www.pak-ks.org>



AGJENCIA KOSOVARE E PRIVATIZIMIT
KOSOVSKA AGENCIJA ZA PRIVATIZACIJU
PRIVATISATION AGENCY OF KOSOVO

Air Photo Image of NewCo



Information

Sales Department
Privatisation Agency of Kosovo
Tel: +381 (0) 38 500 400 ext 1255
Fax: +381 (0) 38 500 400
www.pak-ks.org

Bid Documents

Privatisation Agency of Kosovo
Street: Ilir Konushevcu No:8
10000 Prishtinë/Prishtina, Kosovo

PAK Regional Office
Mitrovica
str. Mbreteresha Teute nn,
(close to Sport Center)
40 000 Mitrovica, Kosovo,
Tel: 038 534 690
Fax: 038 534 590
e-mail: info@pak-ks.org
www.pak-ks.org

No information about the NewCo presented in this Fact Sheet is warranted. Prospective investors are encouraged to contact Privatisation Agency of Kosovo (PAK) to request the bidding documents. Those wishing to submit a bid must rely on their own investigation. Prospective investors are advised to perform their own due diligence prior to submission of any bid or tender proposal. These fact sheet is available under the general terms and conditions on provision of information to the general public on privatisation candidates, which can be downloaded from the PAK Web-Site <http://www.pak-ks.org>